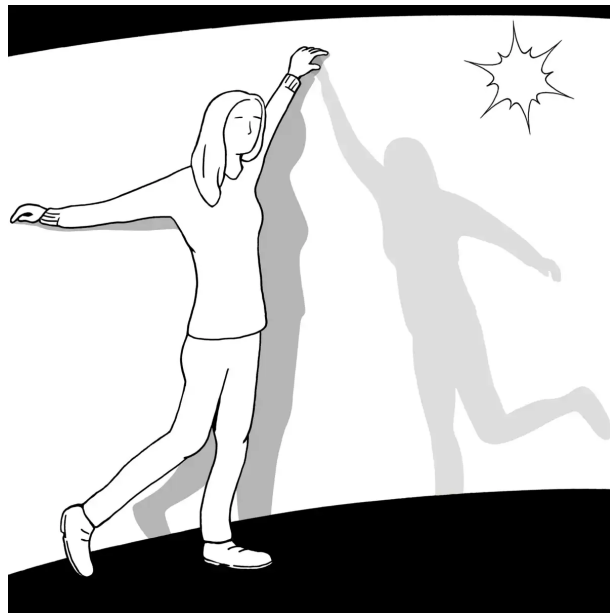


Frozen Shadows

Can a shadow stand still when you walk away?



Press the button to start the countdown ready for the flash.

Position yourself close to the wall. What do you see on the wall after the flash?

Make up a little "shadow play" by posing your body for each scene ready for the next flash.

The wall is phosphorescent: when it is illuminated, the surface material can store the light energy for a while. It then releases this energy slowly, producing a green glow. The wall was not lit where you stood in front of it, and therefore in these areas it does not glow green like the rest of the wall.

How many scenes can you do before the first shadow has disappeared?

Phosphorescent materials have many "glow in the dark" uses: e.g. in clock and watch faces, warning signs, escape routes and light switches.