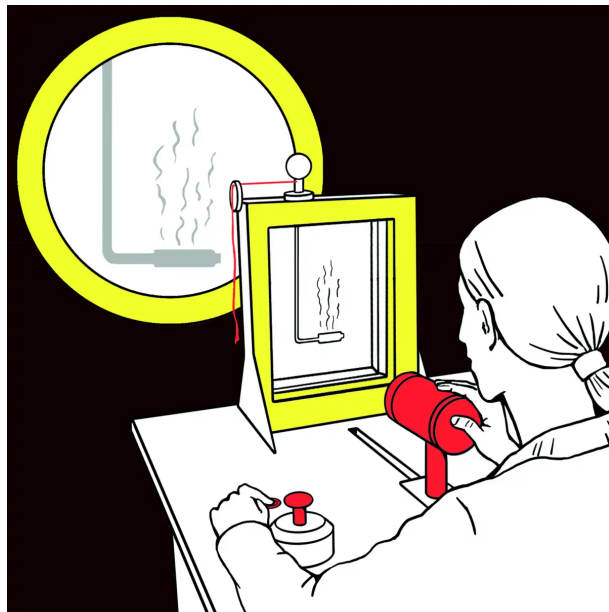


Convection Currents

Can you see differences in temperature?



Hold the green button down and watch the shadow on the screen.

Turn the controller slowly to change the temperature of the heater.

Move the heater gently with the blue string.

Move the lamp to increase the shadow.

The water is heated by the heater. Because warm water is lighter than cold water, it rises, creating turbulent currents. Water of varying density refracts light differently creating patterns on the wall.

Warm air behaves rather like warm water. On hot days, you can see air shimmering as it rises from the hot ground.