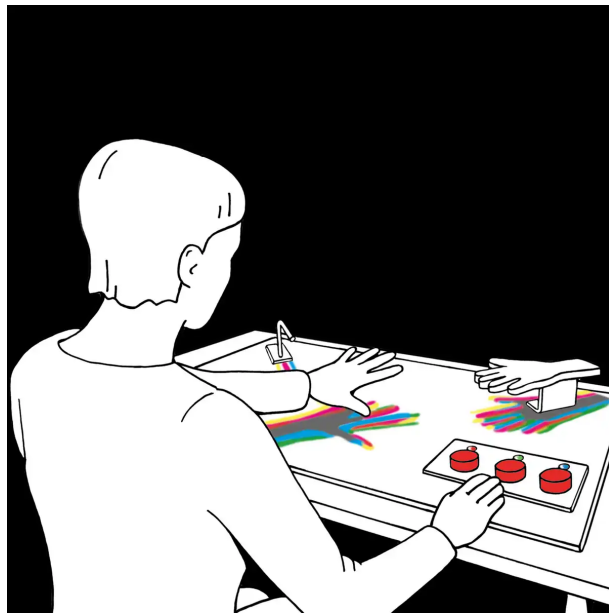


Coloured Shadows

What colour is the shadow of your hand?



Hold your hand above the white table top and move your hand slowly back and forth.

Change the distance to the table top.

Observe the coloured shadows.

Change the intensity of the three lamps. Which colours emerge when only two lamps are switched on?

Red, green and blue light are shining on the white table top. Together they mix to make white light. You create a shadow if you block one or more lamps. The colour of the shadow depends on the lamp(s) you block. If you block the the green light for instance, you will see a pink shadow; if you block the blue light you will see a yellow shadow.

For additive colour mixing you will get a pink result by mixing red and blue colour; when mixing red and green the result is yellow.