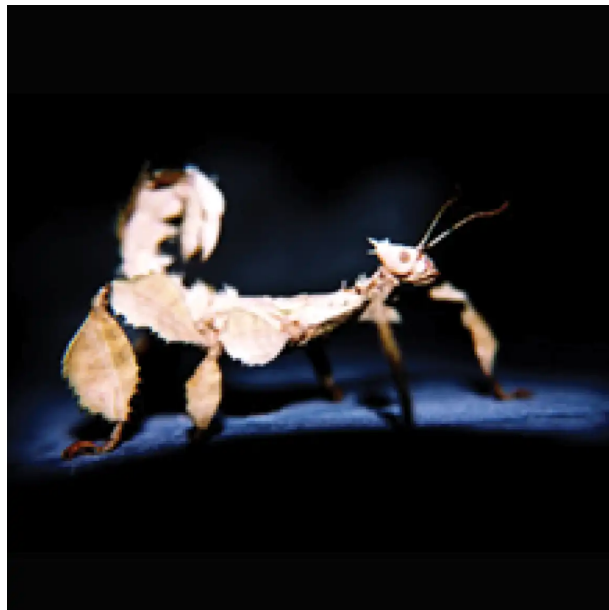


Spiny leaf insects

How many insects can you spot in the terrarium?



Look into the terrarium and search for the insects. Do you see them?

The insects in the terrarium look like dry dead leaves.

Stick and leaf insects, scientifically known as phasmids (Greek phasma = ghost), have perfected the art of camouflage. Some resemble foliage so closely they even feature false buds, thorns and ragged leaflike flanges. Phasmids are completely harmless and rely on their camouflage to escape predators.

When mildly disturbed, some phasmids may sway, imitating a dead leaf or stick swaying in the breeze.